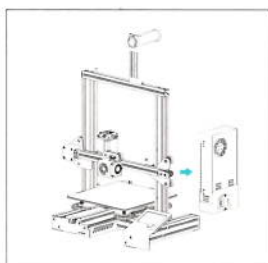
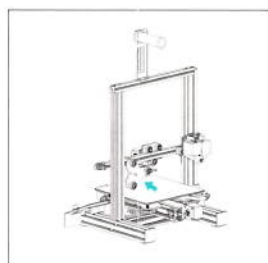


2. Installation steps

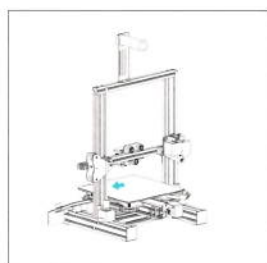
Follow the instructions below to install the assembled double screw rod kit on the 3D printer.



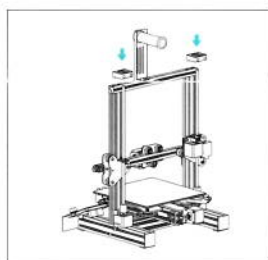
① Remove the switching power supply and set it aside.



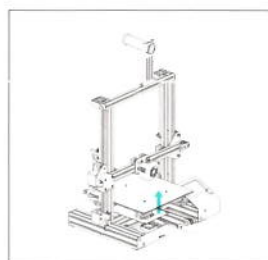
② Remove the Z-axis passive block A and the V-wheel assembly on it, and replace the shaft bolt in the V-wheel with M5x40 bolts in the kit (add isolation posts on both sides of the V-wheel), install the passive block A to the initial position and then install the driven block B.



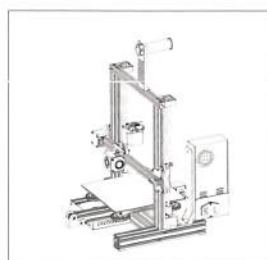
③ First fix the stepper motor on the Z axis with the fixing base, then insert the screw rod into the coupling and tighten the screw.



④ Install the screw rod fixing block from the top and tighten the screws.



⑤ Open the top cover of the motherboard box, find the Z-axis motor cable and replace it with the motor cable from the upgrade kit, connect the two output ports to the two Z-axis motors respectively.



⑥ Install the switching power supply back to the position, as shown in the picture.



SHENZHEN CREALITY 3D TECHNOLOGY CO., LTD.

Add : 18F, JinXiuHongDu Building, Meilong Blvd.,
Longhua Dist., Shenzhen, China 518131

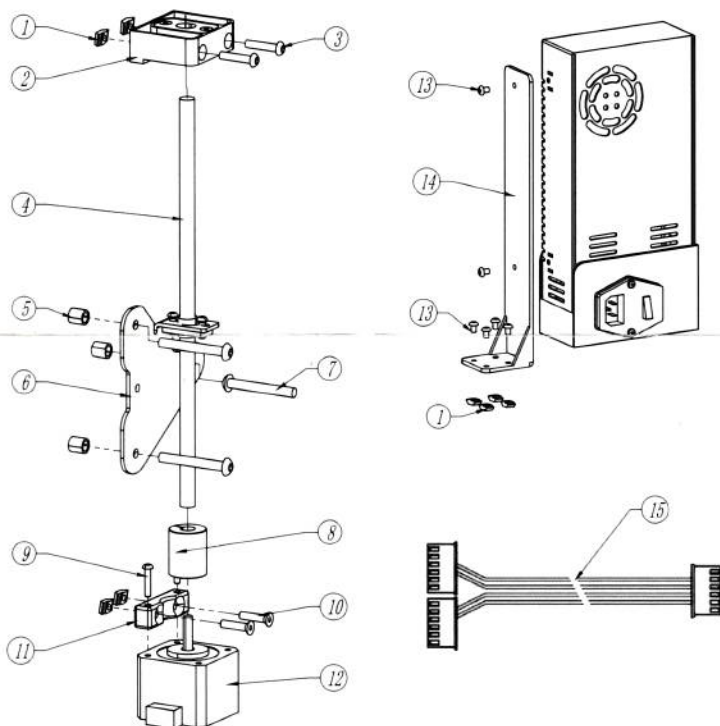
Official Website: www.creality.com Tel: +86 755-8523 4565

E-mail: info@creality.com cs@creality.com

Ender-3 Double Screw Upgrade Kit Instructions

1. Assemble Double Screw Rod Kit

The assembly steps are shown in the figure.



Accessories

- | | | |
|------------------------------------|-----------------------------|-------------------------------|
| 1. T-shaped nut, 10pcs | 7. Bolt M5×40, 3pcs | 13. Bolt M4×6, 6pcs |
| 2. Fixing piece of screw rod, 2pcs | 8. Coupling, 1pcs | 14. Power supply holder, 1pcs |
| 3. Bolt M4×20, 4pcs | 9. Bolt M3×16, 2pcs | 15. Motor cable, 1pcs |
| 4. T-screw, 1pcs | 10. Bolt M4×14, 2pcs | |
| 5. Isolation column, 3pcs | 11. Motor fixing base, 1pcs | |
| 6. Z-axis moving block B, 1pcs | 12. Stepper motor, 1pcs | |